

vertical gardens

indoor & outdoor



green living architecture

Green Living Architecture is the integration of plants and water with built form.

A vertical garden or living wall is a garden that is turned sideways. It is not found anywhere in nature, but with the right tools it can be done with tremendous success. Sempergreen has found the right tools and put them together to create one of the most successful green wall systems available worldwide; the SemperGreenwall.



FACADE LIFE
SPAN EXTENSION



HEALING
ENVIRONMENT





With a SemperGreenwall the overall beauty of the spaces is accented. An outdoor to indoor transition can be achieved, herewith creating an open and pleasant environment.



AMBIENT
NOISE
REDUCTION



FIRE
RETARDANT
LAYER

creative space segmentation



urban landscaping

A SemperGreenwall is an innovative solution for many urban problems, such as urban heating, climate change, noise and air pollution. Living walls are an enhancement to urban spaces and improve natural surroundings for both humans and animals.



AIR
PURIFICATION



AMBIENT
TEMPERATURE
REDUCTION



BIODIVERSITY
INCREASE

healthy workspace

Human capital investment plays an important role in the future of building design. Health, well-being and sustainability are key drivers of real estate value. Indoor Environmental Quality (IEQ) in office buildings has a proven positive effect on employee health, well-being, and productivity. A SemperGreenwall can make a contribution to WELL-certified buildings.



HEALTHY
INDOOR
CLIMATE



LABOR
PRODUCTIVITY
INCREASE



POSITIVE
EFFECT ON
WELL-BEING



retail interior design



BUILDING
VALUE
INCREASES



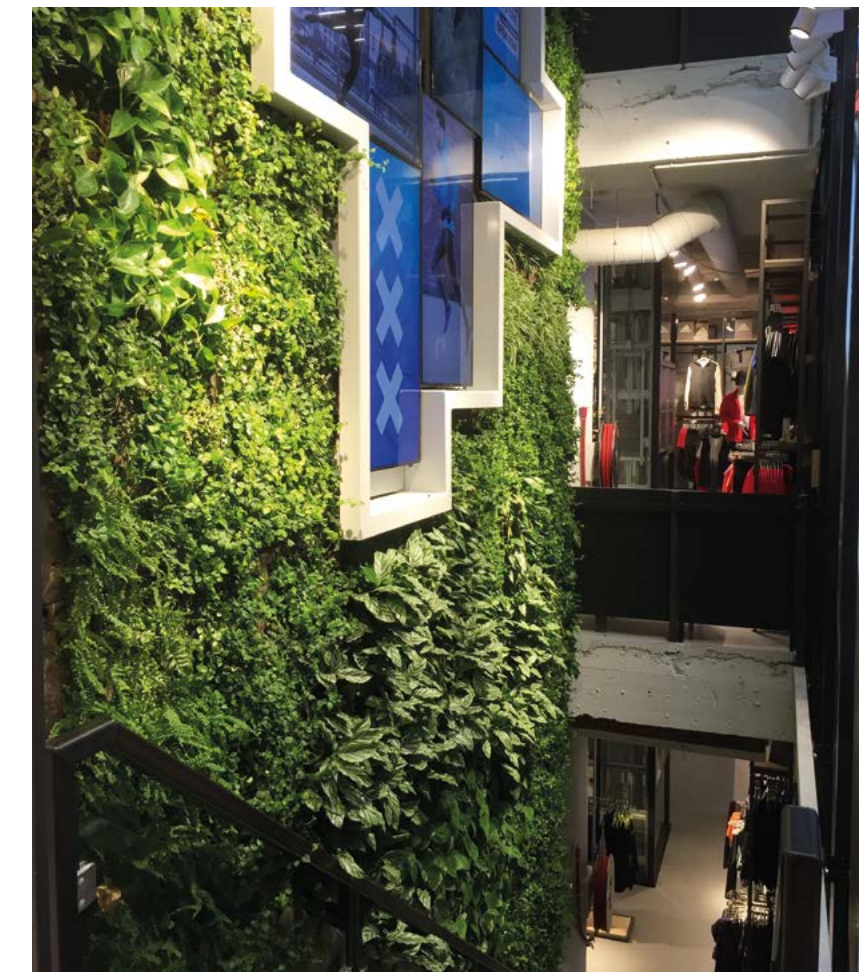
FIRE
RETARDANT
LAYER



MORE
SOCIAL
INTERACTION



A SemperGreenwall enhances the shopping experience in shops and malls. It creates a pleasant environment, where people want to stay longer. In addition, it reduces noise pollution and lowers the ambient temperature. For new construction as well as existing buildings, a SemperGreenwall contributes to a BREEAM or LEED score, always in combination with a set of other measures.



plant happiness

unique plant care system



EFFICIENT
WATER & PLANT
NUTRITION SUPPLY



SUITABLE
FOR EXTREME
CONDITIONS



ROOT
PROTECTION

The Plant Care System of a SemperGreenwall is unique. It is an elaborate system, that ensures each plant's roots to roam freely, micro irrigates the plants to save water and fertilizer and protects the roots from frost and heat. Herewith creating a continuous, monolithic vertical garden with lush, happy plants.

Thanks to the Plant Care System, plant loss is reduced to a minimum and replacement is unnecessary. Maintenance of a SemperGreenwall therefore only consists of pruning.



WATER REUSE



24/7 REMOTE
CONTROL
MONITORING



PRUNING

why a SemperGreenwall?



plant design

At Sempergreen quality is vitally important. Every situation is unique and climatic circumstances differ, which is why Sempergreen has thoroughly tested its assortment of plants.

The plant design possibilities are endless. As an architect, you are offered the opportunity to supply your own design and plant preferences. A SemperGreenwall is always planted with a carefully selected mix of plants, fit to the specific situation and outdoor or indoor climate of your project.



EXPERT PLANT
SELECTION



TAILORED TO
CUSTOMER
WISHES



PLANT CARE
SYSTEM



Plant patterns and logos are among the many options for a SemperGreenwall. Inform us of your wishes and together we will look for the best solution for your project.

pre-grown plants

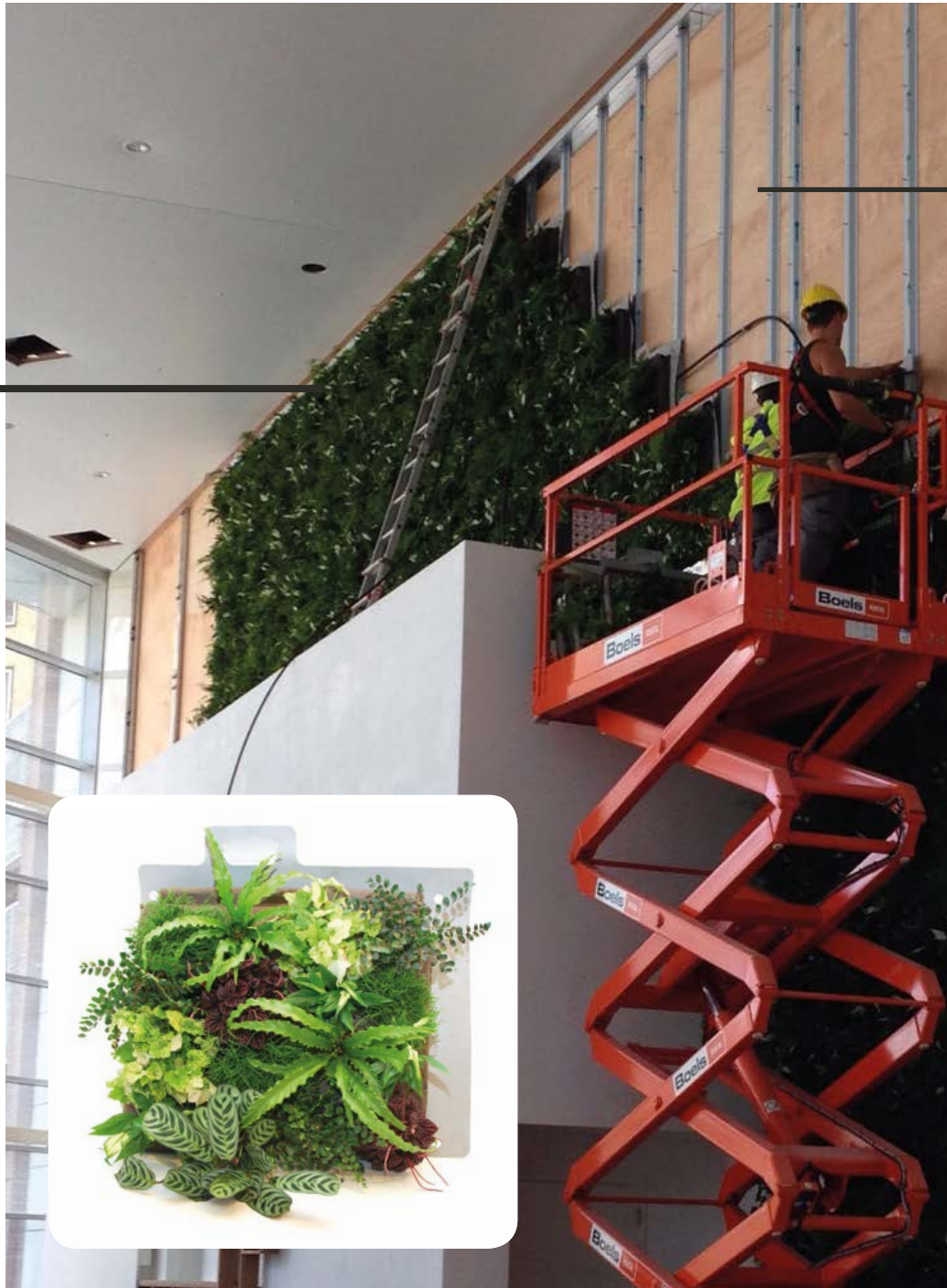
Thanks to its extensive knowledge of plants, Sempergreen selects only the strongest perennial plant varieties for its SemperGreenwall. Combined with many years of cultivation experience since 1998, Sempergreen offers a perfectly grown facade which always has at least 90% coverage on delivery.



PRE-GROWN



PREFERRED
SEMPERGREENWALL
INSTALLERS



construction & design

DRIPLINES

water & nutrition

**PLANT CARE
SYSTEM**

CONSTRUCTION FRAME

Unique hanging system with Omega profiles and waterproof layer

FLEXIPANEL

Modulair, lightweight (45 kg/m2) and most flexible system for corners and curved surfaces. With TPO back side, so no water pollution.

PLANT DESIGN

Customized planting plan with 90% coverage on delivery. Instant green result.

PLANT CARE SYSTEM

Efficient and focused watering and nutrition with an intelligent irrigation computer and drip lines every 50cm. 24/7 remote control monitoring.

EDGING DETAILS & GUTTER

Perfect connection to existing wall. Standard durable aluminum. Available in every possible color.



contact

Sempergreen Group

PO Box 11
NL-3984 ZG Odijk
The Netherlands
info@sempergreen.com

www.sempergreen.com

